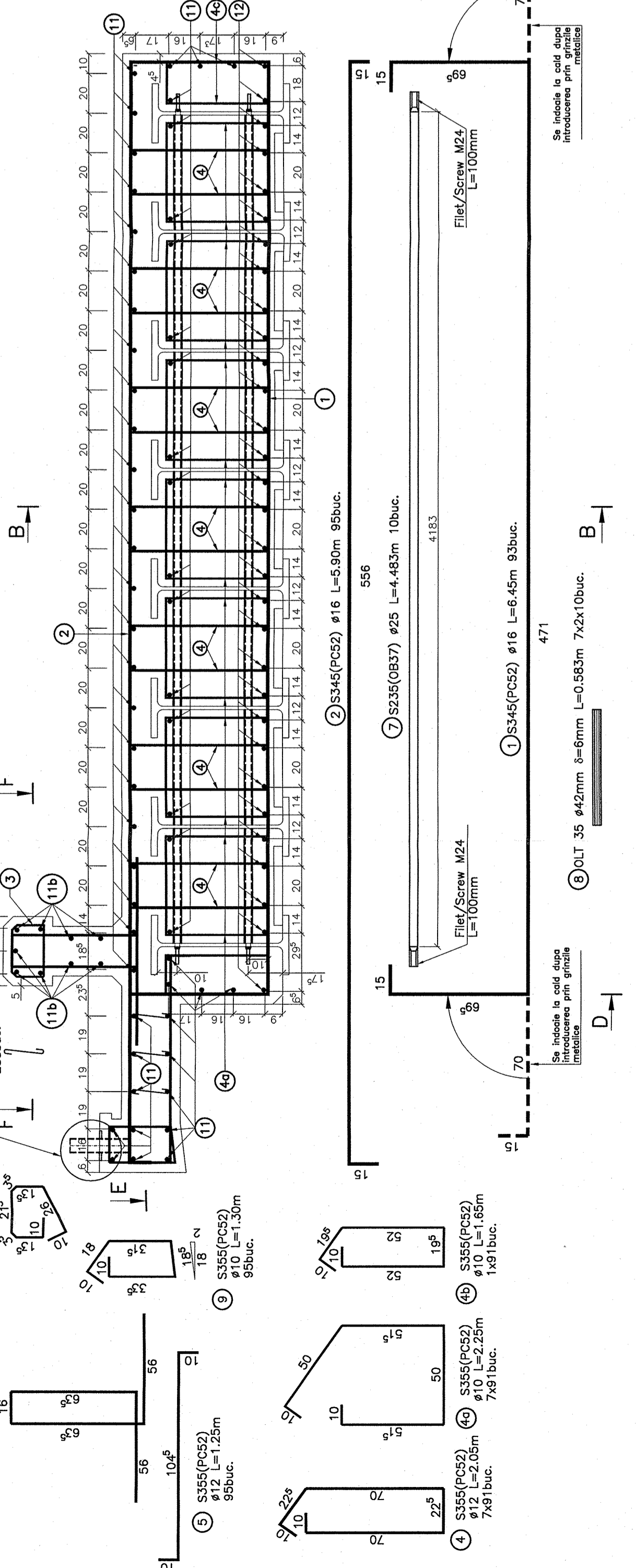
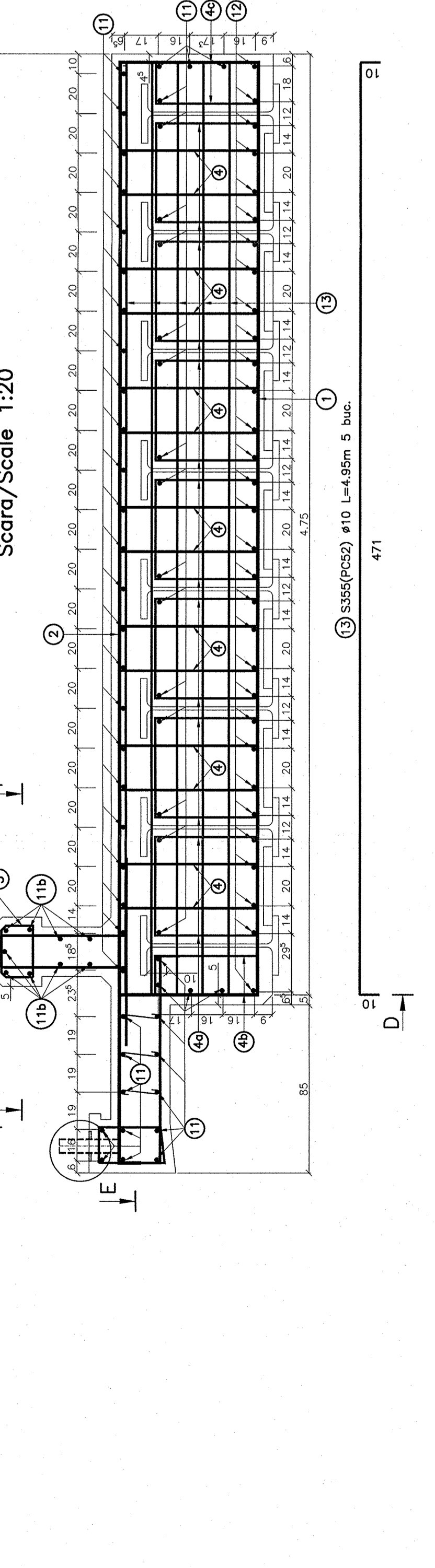


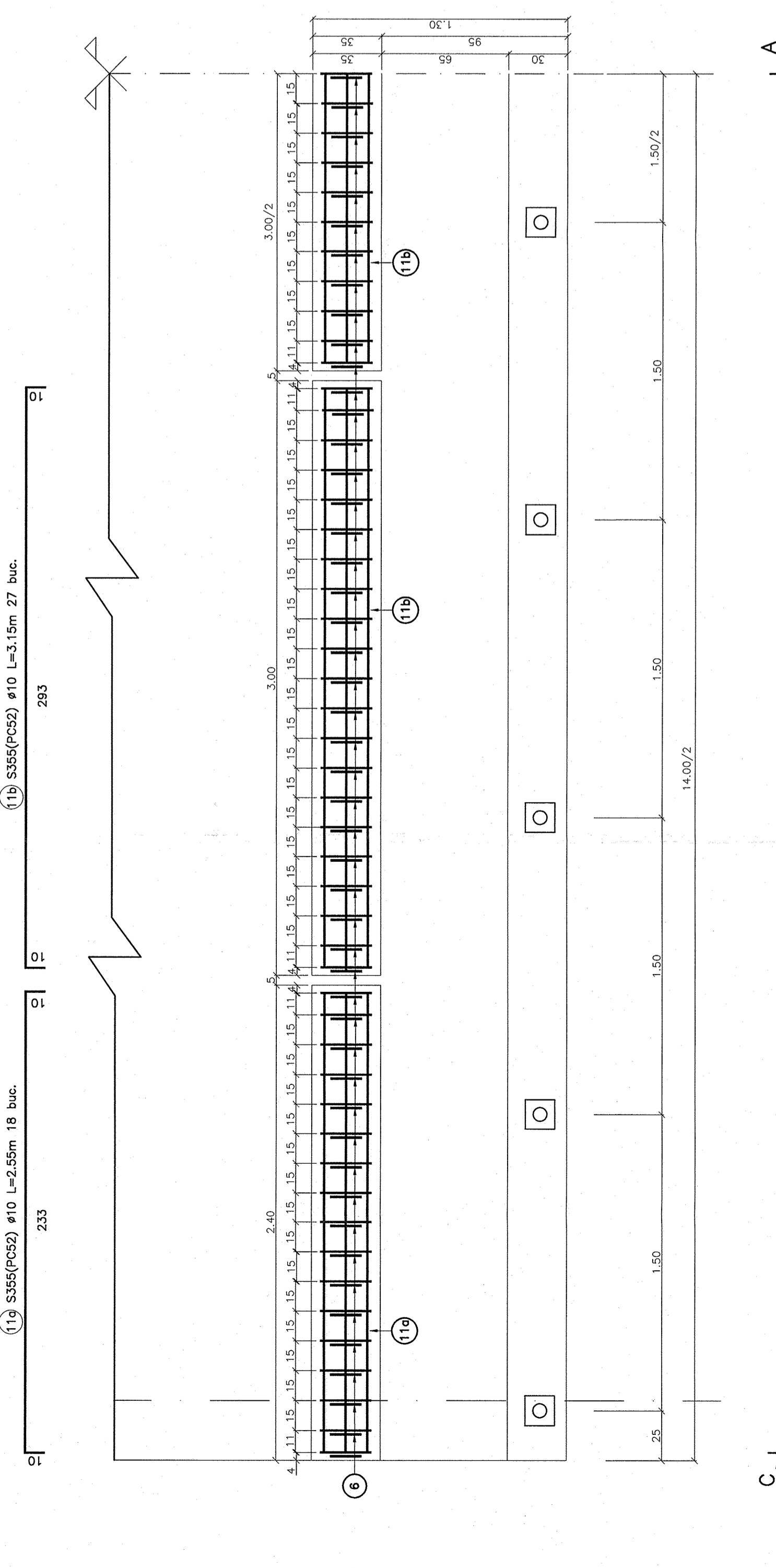
SECTIONNE TRANSVERSALA IN CAMP/TRANSVERSAL SECTION BETWEEN BEARINGS A-A
Scara/Scale 1:20



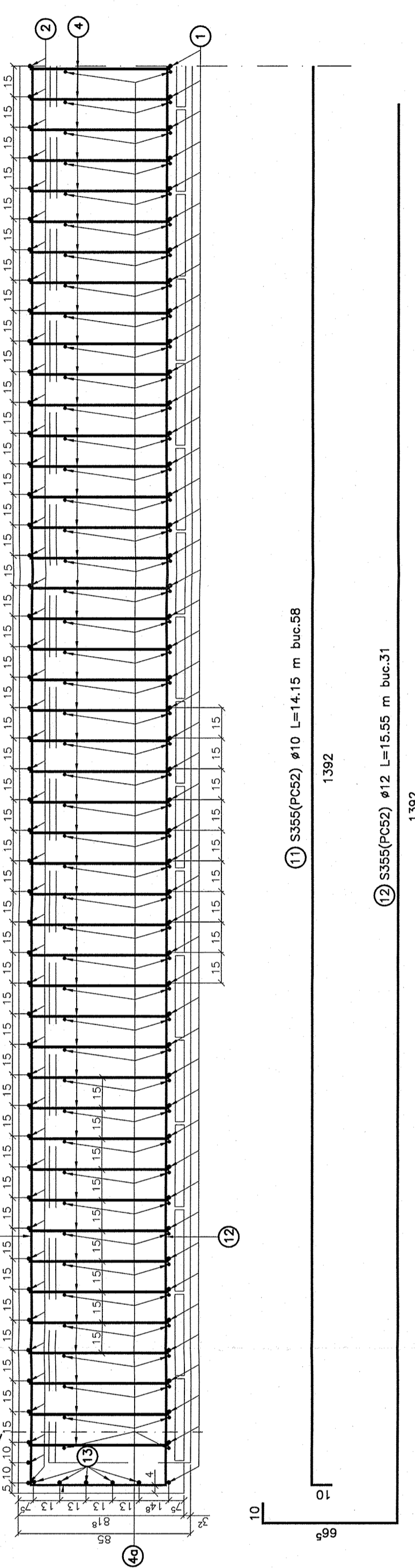
SECTIONNE TRANSVERSALA DE CAPAT/TRANSVERSAL SECTION BEARING C-C
Scara/Scale 1:20



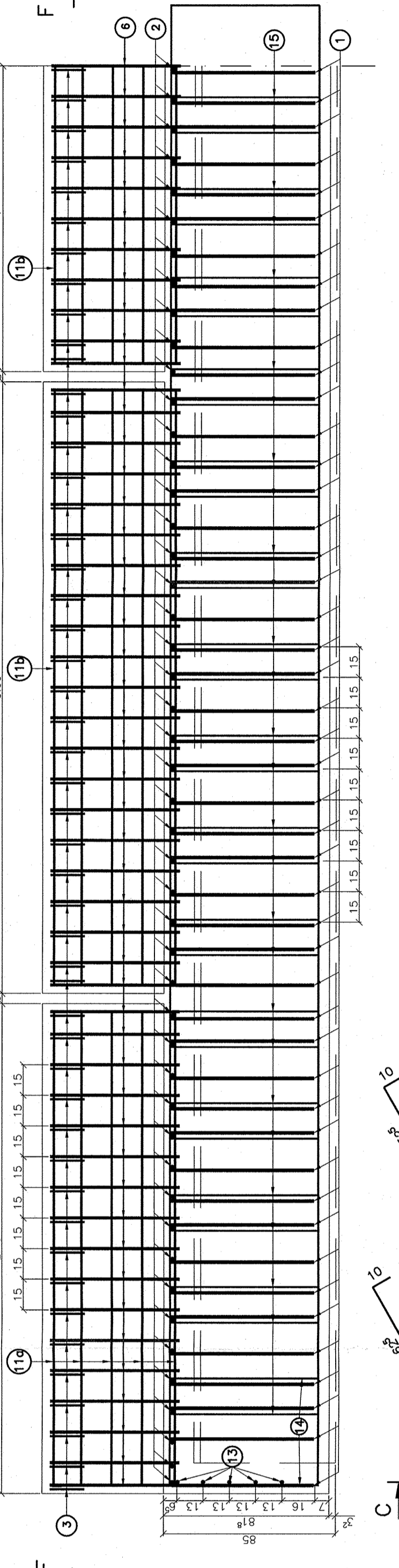
SECTIONNE PLANA PRIN TIMPAN/PLAN SECTION IN CAPPING F-F
Scara/Scale 1:20



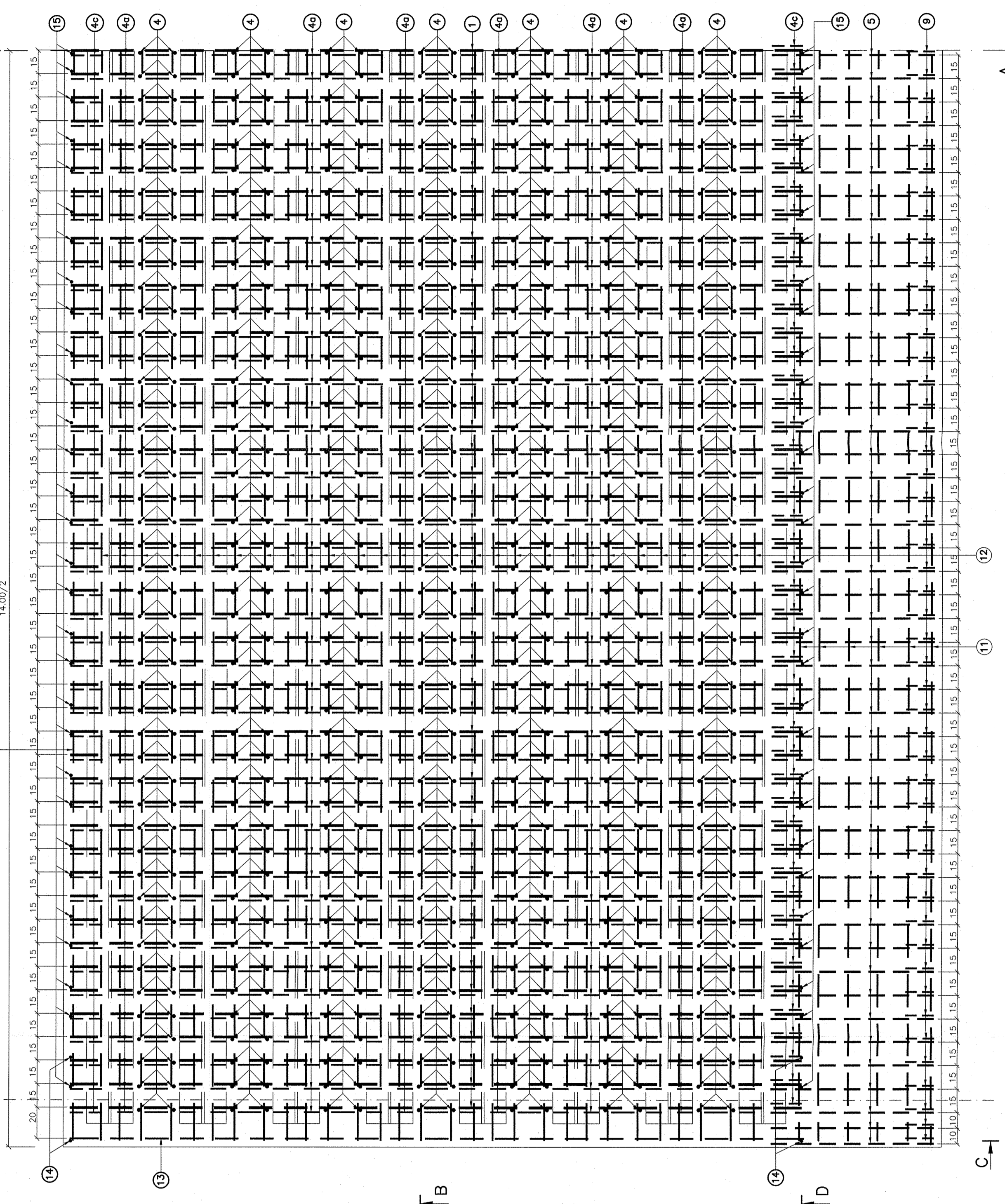
SECTIONNE/SECTION B-B
Scara/Scale 1:20



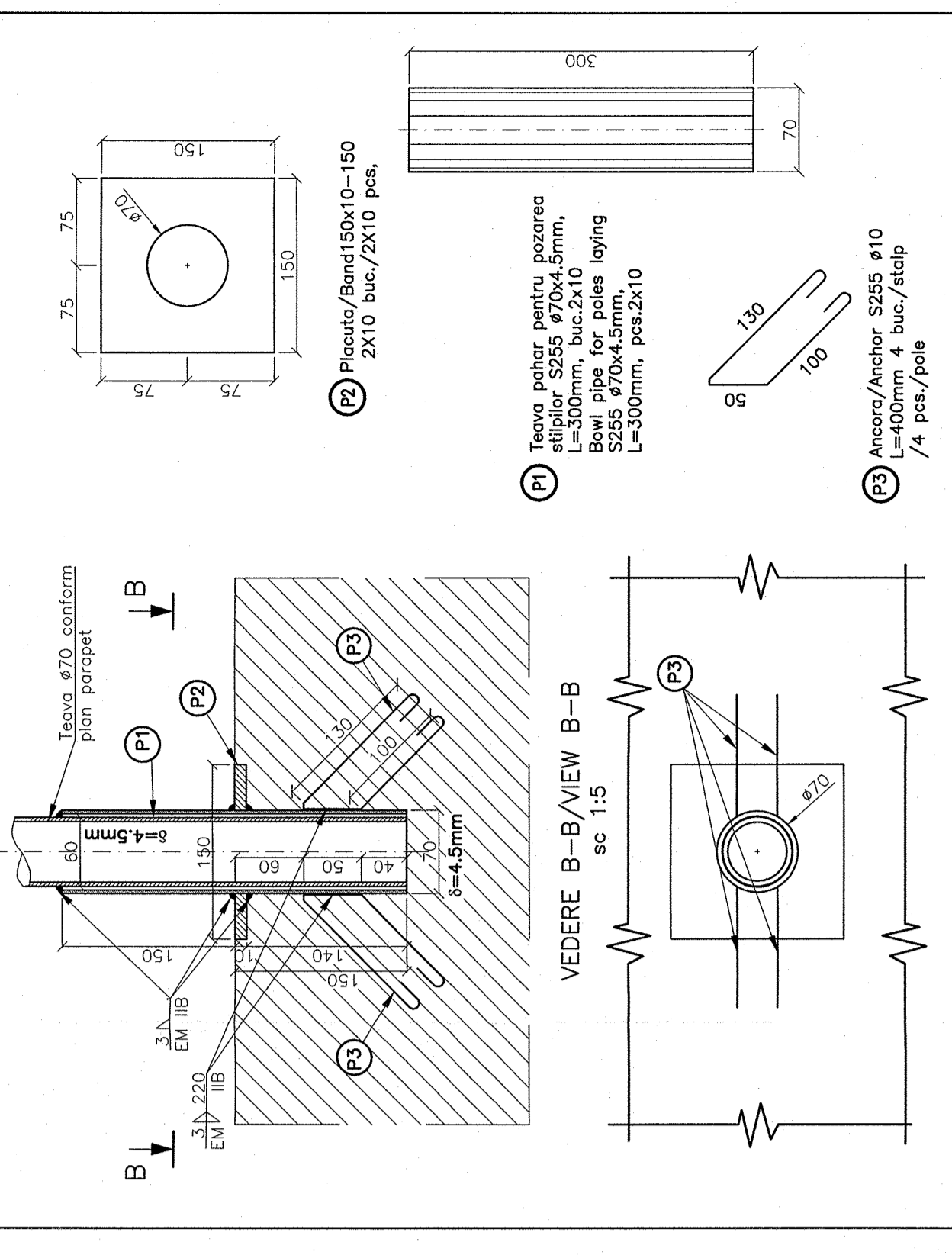
SECTIONNE/SECTION D-D
Scara/Scale 1:20



SECTIONNE/SECTION E-E
Scara/Scale 1:20



DETALIU A/A DETAIL
sc 1:5



EXTRAS MATERIALE DE ASAMBLARE SABRE TOTAL MATERIALS ASSEMBLING ROVES AND NUTS M24

POZ.	Denumire (CONCRETE)	Greutate/Weight (kg/100buc.)
1	Roze/Sabre	31.00
2	Accoz/Ancor	97.50
Total elemente		2.60

EXTRAS MATERIAL PENTRU PRINDERE NECESSARY METALIC MATERIAL FOR HANDLING FOR ONE DECK

POZ.	Denumire (CONCRETE)	Greutate/Weight (kg/buc.)
P1	150x10-150	80.70
P2	150x10-150	1.464
P3	#10 mm	24.64
Total mat. de asamblare/Total elements		130.00

EXTRAS DE ARMATURA/REINFORCEMENT TABLE

Marca	Tip	Dimensiune (mm)	Greutate (kg)	Numar	Total greutate (kg)
S355	PC22	#10	0.617	180	111.06
S355	PC22	#12	1.055	30	31.65
S355	PC22	#14	1.570	4	6.28
S355	PC22	#16	2.230	2	4.46
S355	PC22	#18	3.050	1	3.05
S355	PC22	#20	4.010	1	4.01
S355	PC22	#22	5.020	1	5.02
S355	PC22	#25	6.860	1	6.86
S355	PC22	#28	9.420	1	9.42
S355	PC22	#32	14.700	1	14.70
S355	PC22	#36	21.000	1	21.00
S355	PC22	#40	28.260	1	28.26
S355	PC22	#45	36.750	1	36.75
S355	PC22	#50	46.500	1	46.50
S355	PC22	#56	57.600	1	57.60
S355	PC22	#63	70.800	1	70.80
S355	PC22	#70	87.300	1	87.30
S355	PC22	#78	106.200	1	106.20
S355	PC22	#86	127.500	1	127.50
S355	PC22	#95	151.200	1	151.20
S355	PC22	#105	177.300	1	177.30
S355	PC22	#115	205.800	1	205.80
S355	PC22	#125	236.700	1	236.70
S355	PC22	#135	269.800	1	269.80
S355	PC22	#145	305.100	1	305.10
S355	PC22	#155	342.600	1	342.60
S355	PC22	#165	382.300	1	382.30
S355	PC22	#175	424.200	1	424.20
S355	PC22	#185	468.300	1	468.30
S355	PC22	#195	514.500	1	514.50
S355	PC22	#205	562.800	1	562.80
S355	PC22	#215	613.200	1	613.20
S355	PC22	#225	665.700	1	665.70
S355	PC22	#235	720.300	1	720.30
S355	PC22	#245	777.000	1	777.00
S355	PC22	#255	835.800	1	835.80
S355	PC22	#265	896.700	1	896.70
S355	PC22	#275	959.700	1	959.70
S355	PC22	#285	1024.800	1	1024.80
S355	PC22	#295	1092.000	1	1092.00
S355	PC22	#305	1161.300	1	1161.30
S355	PC22	#315	1232.700	1	1232.70
S355	PC22	#325	1306.200	1	1306.20
S355	PC22	#335	1381.800	1	1381.80
S355	PC22	#345	1459.500	1	1459.50
S355	PC22	#355	1539.300	1	1539.30
S355	PC22	#365	1621.200	1	1621.20
S355	PC22	#375	1705.200	1	1705.20
S355	PC22	#385	1791.300	1	1791.30
S355	PC22	#395	1879.500	1	1879.50
S355	PC22	#405	1969.800	1	1969.80
S355	PC22	#415	2062.200	1	2062.20
S355	PC22	#425	2156.700	1	2156.70
S355	PC22	#435	2253.300	1	2253.30
S355	PC22	#445	2352.000	1	2352.00
S355	PC22	#455	2452.800	1	2452.80
S355	PC22	#465	2555.700	1	2555.70
S355	PC22	#475	2660.700	1	2660.70
S355	PC22	#485	2767.800	1	2767.80
S355	PC22	#495	2876.900	1	2876.90
S355	PC22	#505	2988.000	1	2988.00
S355	PC22	#515	3100.100	1	3100.10
S355	PC22	#525	3214.200	1	3214.20
S355	PC22	#535	3330.300	1	3330.30
S355	PC22	#545	3448.400	1	3448.40
S355	PC22	#555	3568.500	1	3568.50
S355	PC22	#565	3690.600	1	3690.60
S355	PC22	#575	3814.700	1	3814.70
S355	PC22	#585	3940.800	1	3940.80
S355	PC22	#595	4068.900	1	4068.90
S355	PC22	#605	4199.000	1	4199.00
S355	PC22	#615	4331.100	1	4331.10
S355	PC22	#625	4465.200	1	4465.20
S355	PC22	#635	4601.300	1	4601.30
S355	PC22	#645	4739.400	1	4739.40
S355	PC22	#655	4879.500	1	4879.50
S355	PC22	#665	5021.600	1	5021.60
S355	PC22	#675	5165.700	1	5165.70
S355	PC22	#685	5311.800	1	5311.80
S355	PC22	#695	5459.900	1	5459.90
S355	PC22	#705	5609.000	1	5609.00
S355	PC22	#715	5759.100	1	5759.10
S355	PC22	#725	5910.200	1	5910.20
S355	PC22	#735	6062.300	1	6062.30
S355	PC22	#745	6215.400	1	6215.40
S355	PC22	#755	6369.500	1	6369.50
S355	PC22	#765	6524.600	1	6524.60
S355	PC22	#775	6680.700	1	6680.70
S355	PC22				